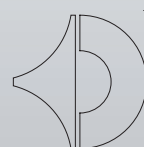


UNO FINO | FACT SHEET

The perfect Avantgarde for smaller environments



avantgarde
ACOUSTIC

UNO FINO | FACT SHEET

The perfect Avantgarde for smaller environments

UNO FINO

104 dB sensitivity

8 ohm drivers

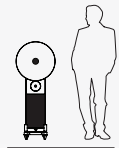
20 inch spherical midrange horn

CDC system with no crossover

Bass with active feedback control

2 x 8 inch neodymium bass drivers

250 watt subwoofer amplifier with 60.000 μ F



THE SYSTEM

The Uno Fino is a scaled-down version of the classical Uno system. The objective during the development of this compact horn system was to accomplish the clarity and power of its “bigger” brother in a significantly reduced enclosure.

With the development of a totally new and smaller 8 inch bass driver we were able to reduce the cabinet structure of the Uno Fino significantly, compared to the original Uno. The horns are now an integral part of the speaker body.

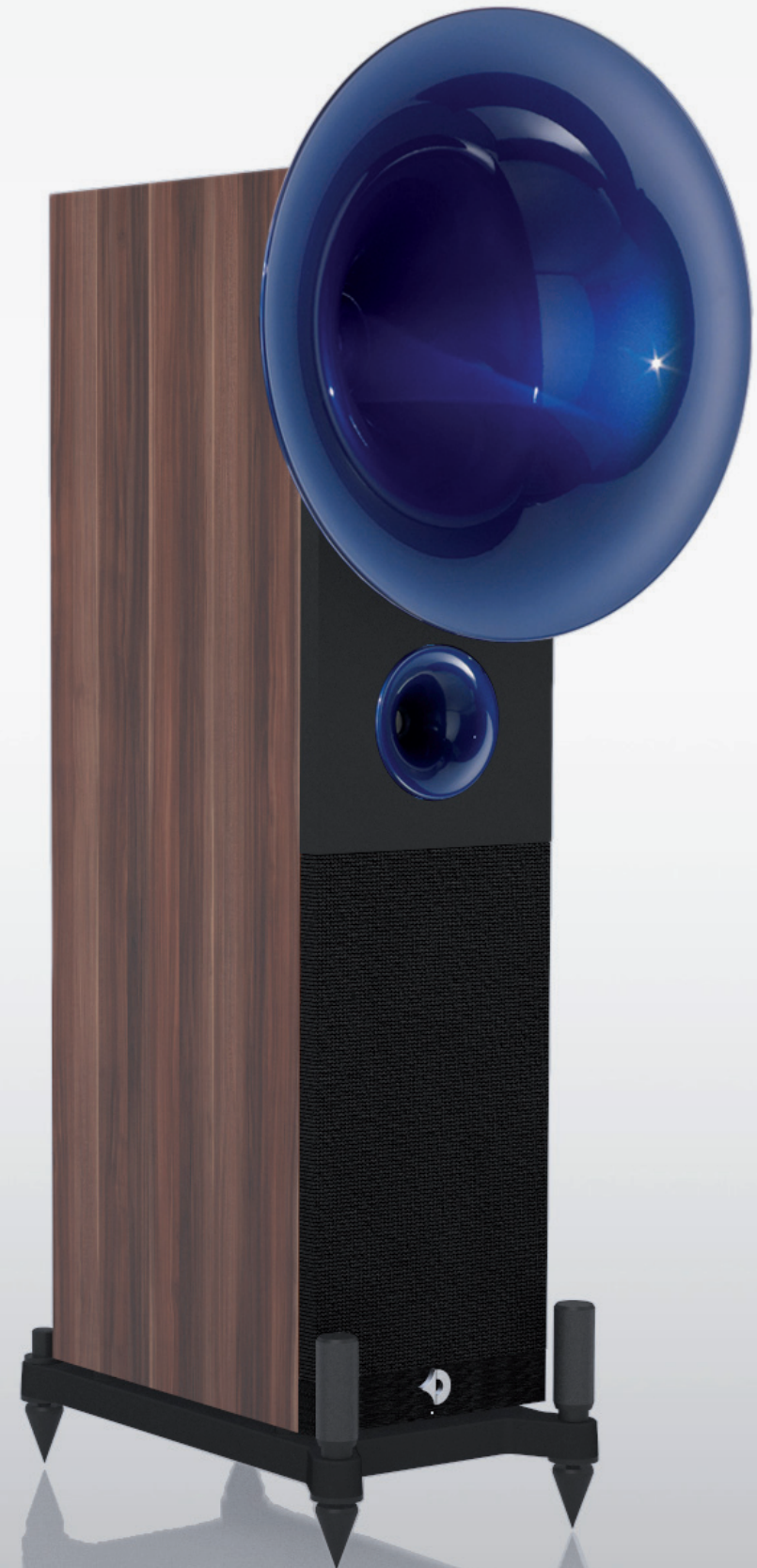
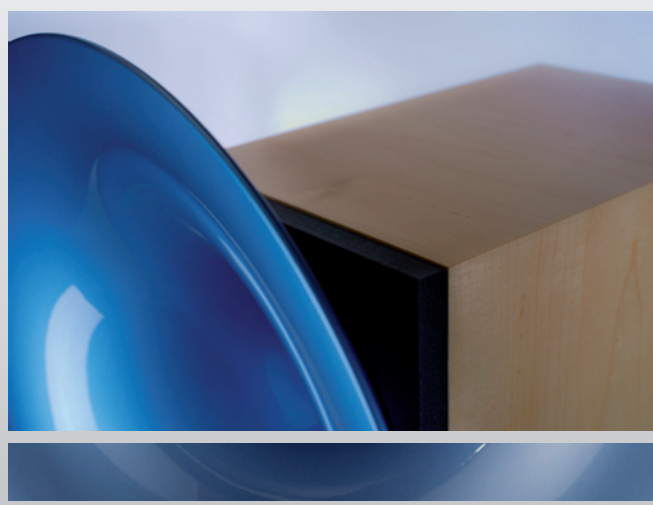
Straight, without frills and reduced to the max. But still endowed with the typical elements of our brand and thus immediately recognizable as an Avantgarde system:

The Uno Fino – the perfect Avantgarde for smaller environments.

The Uno Fino is a passive 2-way spherical horn speaker system combined with the integrated active subwoofer Sub 221.

At the heart of the system stunningly deep midrange frequencies down to 300 Hz are covered by the remarkable 20 inch (500mm) spherical midrange horn powered by Avantgarde Acoustics™ proprietary 5 inch (127 mm) M1 driver.

Its high sensitivity (104 dB/W/m) and hybrid concept with the self-powered 250 Watt subwoofer make it very easy to drive with any amplifier. Even with low powered tube amps the Uno Fino is able to deliver a powerful, dynamic and three-dimensional sound, as the power-demanding work at low frequencies is managed by the active subwoofer Sub 221.

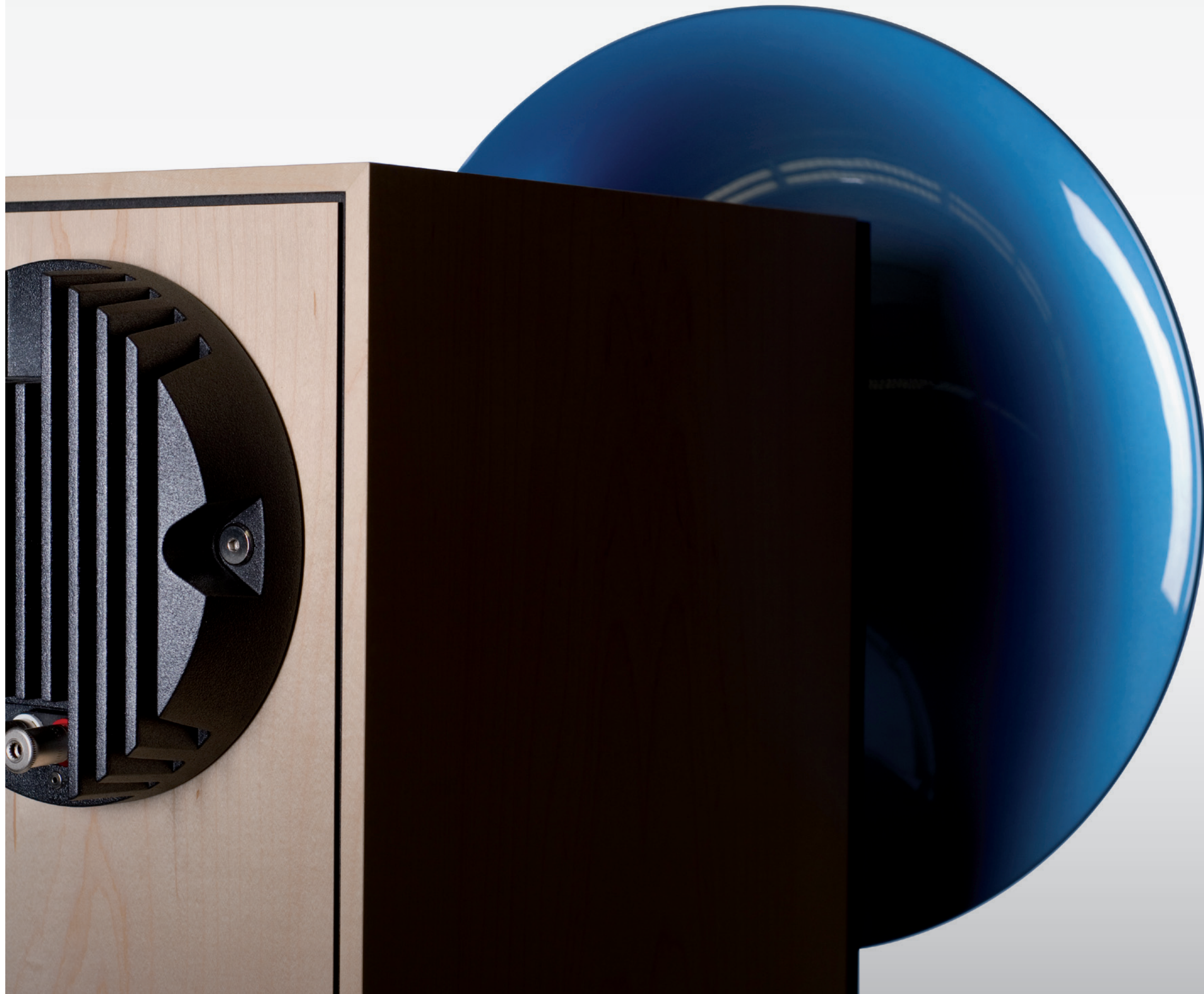


UNO FINO | FACT SHEET

The perfect Avantgarde for smaller environments

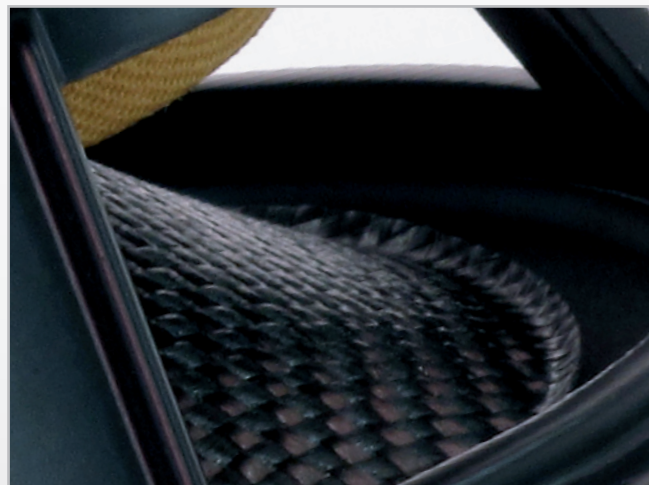


avantgarde
ACOUSTIC



UNO FINO | DRIVERS

The perfect Avantgarde for smaller environments



THE MIDRANGE HORN DRIVER

The utmost care when choosing the drivers is the key to successfully transforming the theoretical advantages of the horn technology into an outstanding High End speaker. As most people focus on treble and bass response, Avantgarde Acoustic™ considers the midrange as the “heart” of each speaker system.

The M1 is a 130 mm (5 in) midrange driver with a 75 mm (3 inch) dome especially developed for the Uno and optimized for a large, linear excursion. A double ferrite magnet assembly is used to generate a powerful magnetic field which homogeneously controls the movement of the voice coil. The M1 has a very low cut-off frequency with seamless and crossover-less integration to the subwoofer. The design of the dome ensures a phase-neutral radiation of the sound waves into the midrange horn SH5002 and wide bandwidth of the extended midrange down to 290 Hz.

The carbon midrange cone of the M1 is coated with trillions of tiny microfibrils generating a “*Velours Damping Effect*”. The microscopic fibers of the VDE technology help to effectively absorb high frequency distortions and reduce partial resonances of the cone itself.

The Avantgarde Acoustic™ proprietary CDC system features a controlled roll-off at 3,000 Hz, and allows us to completely eliminate all passive crossover components in the signal path. This way the M1 gets the pure and non-distorted full-range signal directly from the amplifier!

The nominal impedance of the M1 is 8 ohm and the M1 sensitivity is 104 dB (1Watt/1m).



UNO FINO | DRIVERS

The perfect Avantgarde for smaller environments



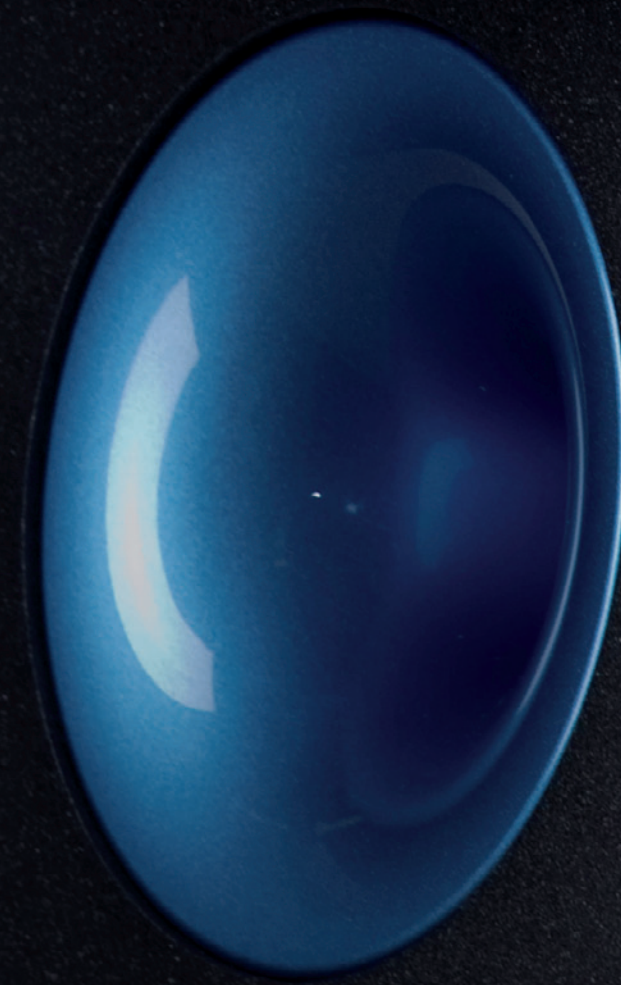
THE TWEETER HORN DRIVER

Based upon the same design principle of the Trio tweeter H3, the H1 offers very low distortion and excellent transient characteristics.

With its powerful 44 mm voice coil (1.75 inch) the H1 is a high-frequency tweeter providing an extremely wide frequency range acoustically reaching down to 1 kHz. Extreme reserves and long time reliability are ensured, as the H1 operates down to 2000 Hz.

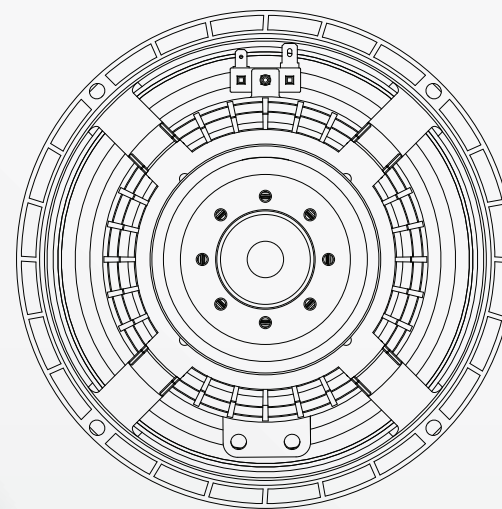
The increased magnetic structure of the tweeter with a weight of 3 kg (6.5 lb) results in a sound pressure level of 104 dB (Watt/m) at very high power rating.

The nominal impedance of the H1 is 16 ohm.



UNO FINO DRIVERS

The perfect Avantgarde for smaller environments

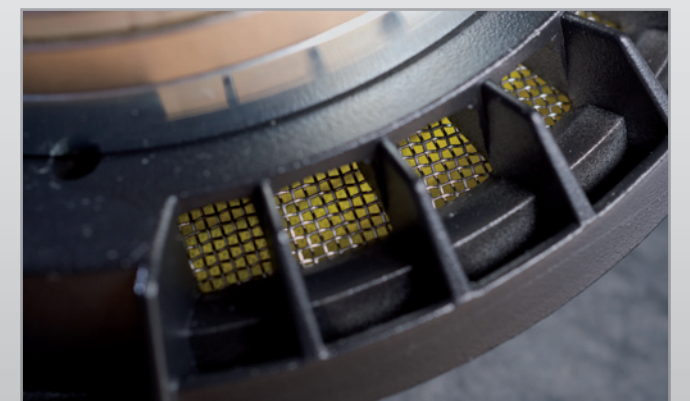


THE SUBWOOFER DRIVER

The Uno Fino is supplied with the active subwoofer Sub 221, which is driven by two newly developed powerful 20 cm (8 inch) long-excursion drivers.

The 8-ND250 long excursion drive unit – likely one of the best 8 inch drivers in the world – is characterised by its extremely high efficiency and utmost power handling capabilities. The extended controlled excursion is ± 6.5 mm. Exclusive neodymium magnets with a special under-pole magnet topology are used to maximize the flux density in the air gap and to eliminate energy leakage of the magnetic field.

The powerful neodymium magnet with a very strong BL power factor and the very stiff but light membrane will ensure the highest resolution and authority even with complex signals at extreme sound pressure levels.



UNO FINO | AMPLIFIER

The perfect Avantgarde for smaller environments



THE SUBWOOFER AMPLIFIER

The integrated active PA 107 electronics consists of a powerful 250 watt amplifier and an active frequency crossover. A forceful 330VA toroidal transformer and an energy reservoir of 60.000 μ F providing ample energy reserves and dynamic headroom.

In order to achieve full control to overcome the inertia of the driver mass, the PA 107 is equipped with Avantgarde's genuine adaptive motional feedback circuitry. These ultrafast analogue electronics compensate for signal deviations induced by the circuit and drivers in real-time. As a result the Sub 221 achieves an astonishingly flat frequency response down to 18 Hz! Furthermore, even at very low listening levels – when the music signal is too weak to overcome the inertia of the bass driver mass – the adaptive motional feedback circuitry will seamlessly increase its power output for a full and rich bass response.

The active crossover allows the adjustment of a number of parameters thus ensuring a very easy and fast installation of the system even in acoustically critical situations. A 3-position subsonic switch, variable settings for the input sensitivity and crossover frequencies make the Sub 221 extremely versatile. The Sub 221 can be remotely switched on/off using the 12V trigger signal.

The Sub 221 is driven via high power speaker terminals for direct connection to integrated amps, power amplifiers or receivers or alternatively via XLR terminals. The signal take-off is not only at high impedance, but is also balanced and transformer coupled. This floats the subwoofer ground, avoiding hum loops and eases connection to balanced and bridged amplifier designs.

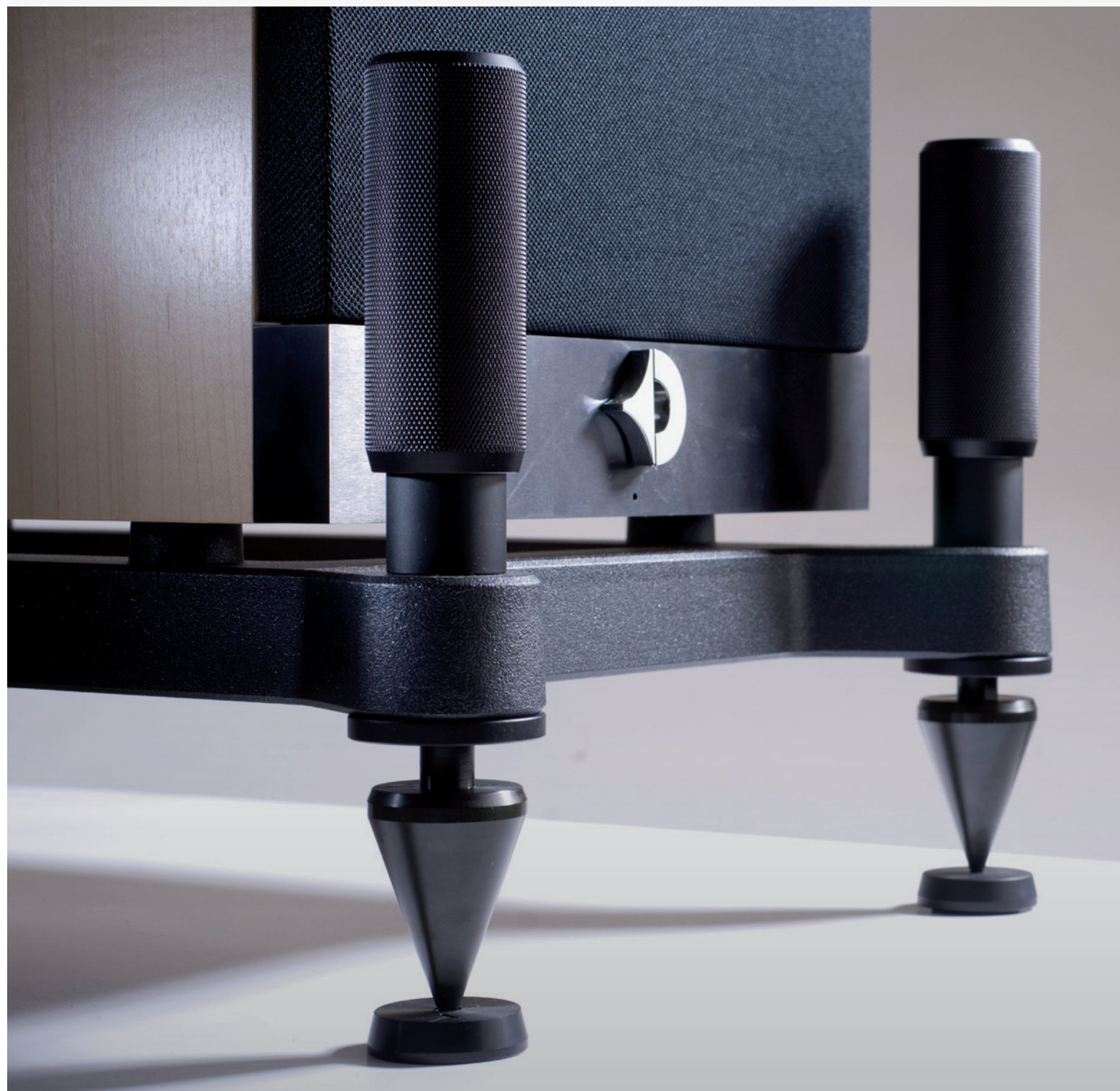


UNO FINO CONSTRUCTION

The perfect Avantgarde for smaller environments



avantgarde
ACOUSTIC



MECHANICAL CONSTRUCTION

We have tried our very best to design the Uno Fino as lean as possible. No needless edges, no gadgets, no playing around with materials and surfaces. No forced design gimmicks.

But a simple functional corpus with a natural wooden surface. A lean design of the body which does not tend to attract fake attention.

The reason is simple:
The bionic shape of the spherical horns take center stage.

This is reflected in the sound and aesthetics of the Uno Fino and all Avantgarde Acoustic speaker systems.

The midrange and tweeter assembly are integral parts of the subwoofer enclosure.

The entire loudspeaker system is placed on a solid cast aluminium base frame. The spike assembly of the base frame – featuring solid 55 mm spikes and massive adjusting handles – are easily accessible from the top.



UNO FINO | COLORS

The perfect Avantgarde for smaller environments



HORN COLORS

 Stealth Nocturne Black ¹⁾	 Turmaline Vivid Black
 Stealth Nocturne Grey	 Shiny Citrine Orange ¹⁾
 Diamond Crystal Silver	 Ruby Brilliant Red
 Akoya Pearl White	 Sapphire Burma Blue
 Light Amber Bronze	 Light Topas Blue
 Saona Beach Cream	 Smaragd Pearl Green

ENEERS AND HORN COLORS



¹⁾ optional customized color

A selection of ten standard colors is available for the horns. This includes eight metallic lacquer finishes, the uni-color “*Saona Beach Cream*” finish and the modern “*Stealth Nocturne Grey*”. The special “*Shiny Citrine Orange*” multi-layer coating is available as an option.

The speaker body can be ordered in either of the following wooden veneers: “*Syca Bright Maple*” or “*Jacaranda Aura Rosewood*”. Both veneers can be combined with any of the available horn colors.

AWARDS



UNO FINO
 SPECIFICATIONS

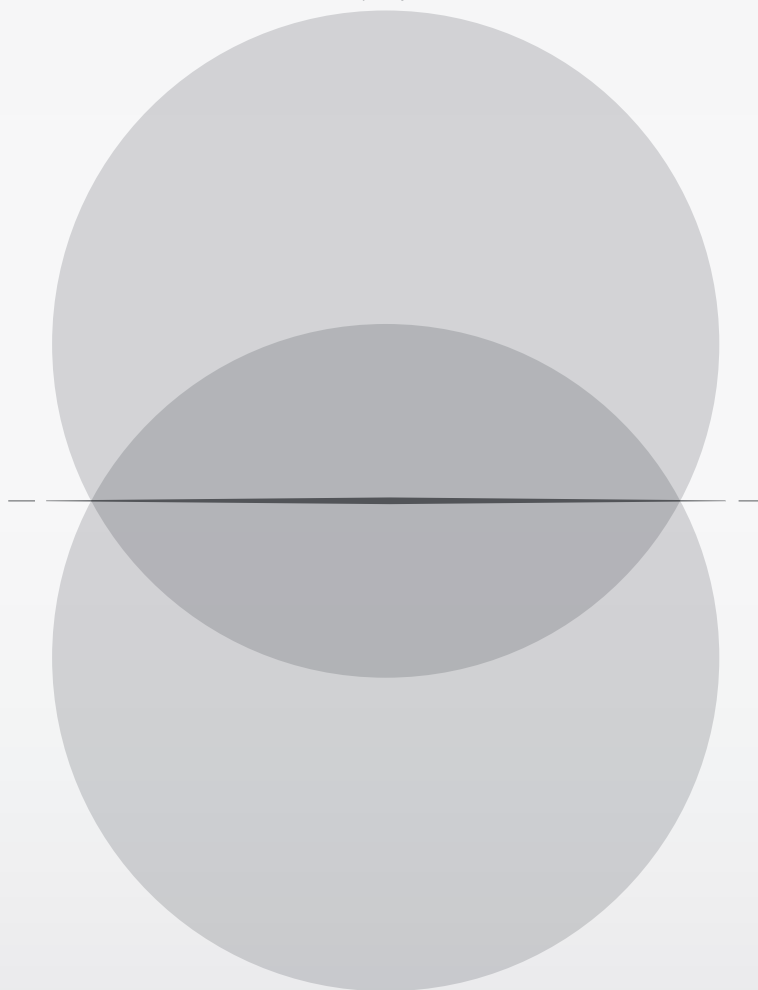
The perfect Avantgarde for smaller environments



SYSTEM DATA	
Frequency response	satellite subwoofer
Power capacity	
Sensitivity (1 Watt / 1 m)	
Crossover frequencies	
Nominale Impedance	
Recommended amplification	
Recommended room size	
CDC (Controlled Dispersion Characteristic)	
CPC crossover (patent pend.)	
HORN	
Horn type	
Horn material	
Horn finish	
Dispersion type	
Horn mouth area	low mid range mid range high range
Horn mouth diameter	low mid range mid range high range
Horn length	low mid range mid range high range
HORN DRIVERS	
Diameter	low mid range mid range high range
Magnet material	low mid range mid range high range
SUBWOOFER	
Power Output (RMS)	
Power capacitance	
Toroidal transformer	
REAL TIME feedback control	
ADRIC circuit (patent pend.)	
Active frequency crossover	
Subsonic filter, 3-positions	
Automatic 12V remote On/Off	
Smart Limiter	
SoftStart circuit	
Driver diameter	
Number of drivers per module	
Magnet material	
DIMENSIONS/WEIGHT	
Dimensions	width depth height (+/- 15 mm)
Weight	

	290 – 20.000 Hz
	18 – 350 Hz
	50 Watts
	> 104 dB
	290 / 3.000 Hz
	8 Ohm
	> 10 Watts
	> 16 m² / 170 ft²
	Yes
	No
	Spherical horn
	ABS injection mold
	polished
	180 degree
	n/a
	0,196 m² / 304 in²
	0,013 m² / 20 in²
	n/a
	500 mm / 20 in
	130 mm / 5 in
	n/a
	280 mm / 11 in
	65 mm / 2.6 in
	n/a
	127 mm / 5 in
	25 mm / 1 in
	n/a
	Ferrite
	Ferrite
	250 Watts
	60.000 µF
	330 VA
	Yes
	n/a
	variable 60 – 350 Hz
	20 / 30 / 40 Hz
	Yes
	Yes
	Yes
	205 mm
	2
	Neodym
	500 mm / 20 in
	590 mm / 23 in
	1.240 mm / 49 in
	55 kg / 121 lbs

purity



performance



avantgarde
ACOUSTIC

Avantgarde Acoustic GmbH
Nibelungenstraße 349
D-64686 Lautertal
Germany

Tel: +49.6254.306100
info@avantgarde-acoustic.de
www.avantgarde-acoustic.de